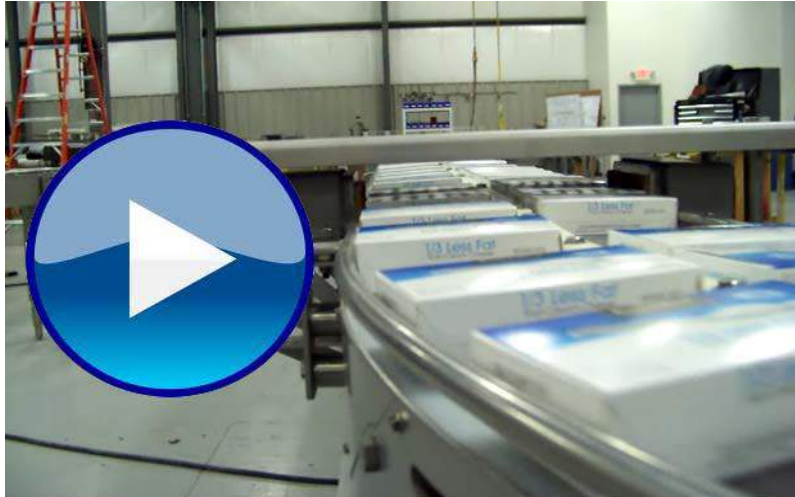


Note: Due to the age of this e-newsletter, some of the links have been disabled. Please contact marketing@multi-conv.com if you would like specific information on any information inside of this archived message.



MULTI-CONVEYOR, LLC
YOUR BEST, CONVEYED BETTER

Call for a quote: **800.236.7960**



Sanitary High Speed Dairy Application

Featuring horizontal curve and traffic clamp for accumulation.

This [brief video](#) shows a high speed sanitary conveyor that moves boxes of cheese through a horizontal curve then down the line to a clamp feature that aids in accumulation, taking off pressure between boxes. [Multi-Conveyor](#) excels in [sanitary designs](#) that are sought after by the country's leading cheese, yogurt and dairy producers due to our extensive understanding that food industries need effective, easy-to-clean, wash down designs.

Multi-Conveyor is keenly aware of making sure our sanitary solutions are agency compliant or recognized including USDA, WDA, AMI, FDA, meat, dairy, BISSC and more. Several frame designs have a variety of features such as... [\(read on\)](#)

Then, visit our [entire video gallery](#) to see other brief clips of outstanding conveying solutions by Multi-Conveyor.

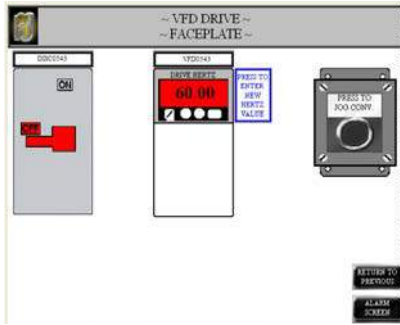
Even more...

**Tweet us, Follow us,
Like us!**



*Plan to visit [Multi-Conveyor](#) at
[The Int'l Cheese Technology Expo](#)
April 22-24, 2014 - Milwaukee WI
- USA*





New Developments:

PanelView™ Plus

Multi-Conveyor recently came up with a new faceplate on the **PanelView™** for our VFD's that saves an incredible amount of time. With the touch of the screen, you can monitor disconnect and drive statuses, manually jog motor and change the frequency of your VFD. Just touch the motor you want and the specification for that motor comes up instantly for fast and easy use by operators and maintenance personnel. [Learn more...](#)



Ring in the New Year

The entire staff at Multi-Conveyor hopes you and yours had a safe and blessed holiday season. We thank you, our valued customers and business associates, for your continued support of Multi-Conveyor. We are in complete appreciation of your dedication and will continue to serve you in 2014 with the utmost in [engineering](#) and design, [manufacturing](#) the quality products that you deserve.



Highlights from 2013

You can find all of the highlights of Multi-Conveyor's 2013 "year in review" by clicking on [this link](#). Each of our monthly newsletters are conveniently tagged on this page with a brief description of the product, event or announcement that was featured in any given month. However, we urge you to open the links and read [all](#) of the content for each month!

Then, call us. Let's discuss your next project: **1-800-236-7960**.

Note: Due to the age of this e-newsletter, some of the links have been disabled. Please contact marketing@multi-conv.com if you would like specific information on the content or videos inside of this archived message.

Find all of our videos at:

<http://www.multi-conveyor.com/multi-media-center/videos>